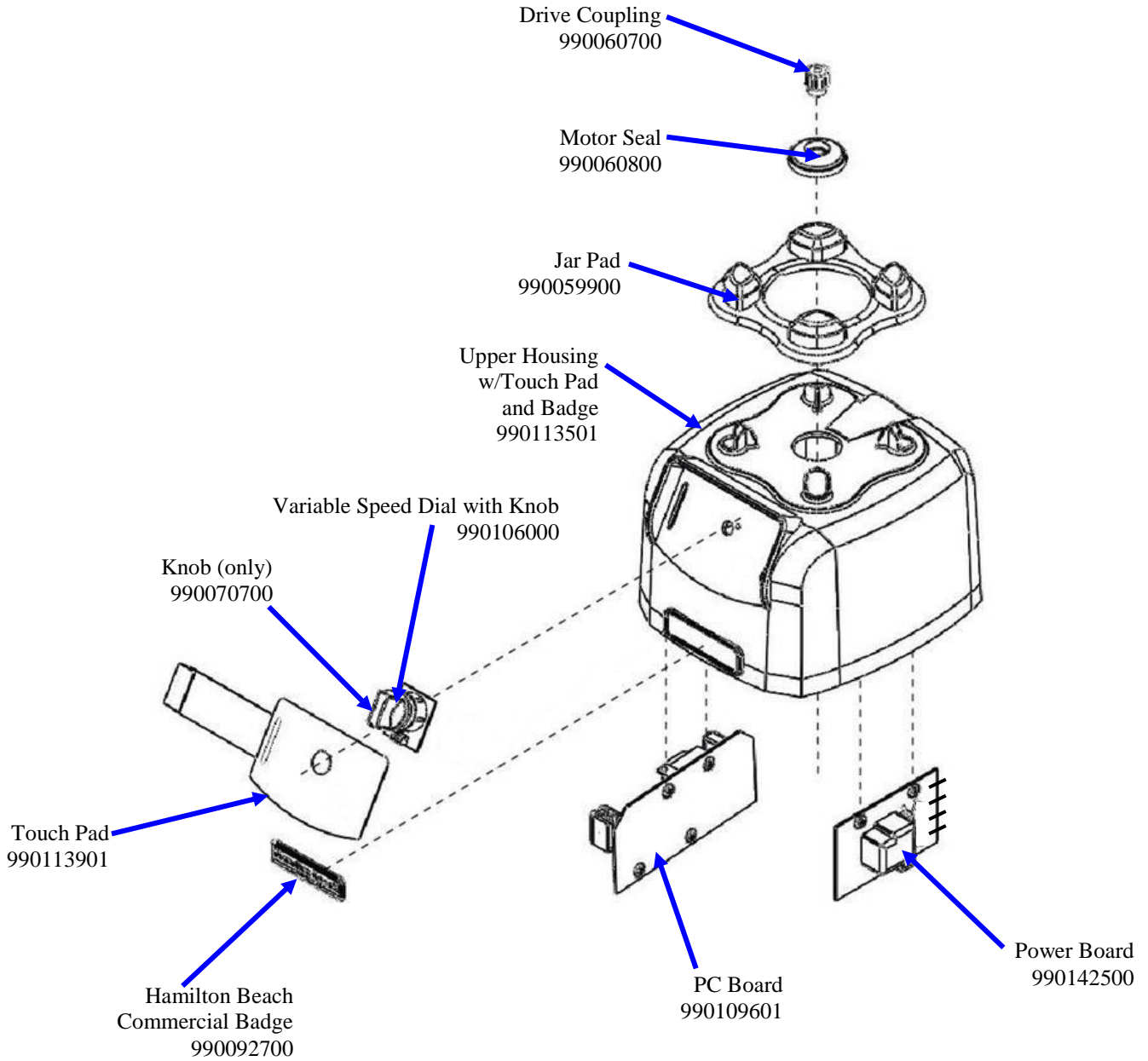



Replacement Parts Diagrams

HBF600

PROPRIETARY RIGHTS NOTICE This document and all information contained within it is the property of Hamilton Beach Brands, Inc. (HBB). It is confidential and proprietary and has been provided to you for a limited purpose. It must be returned or destroyed upon request. Disclosure, reproduction or use of this document and any information contained within it, in full or in part, for any purpose is forbidden without the prior written consent of HBB. No photographs may be taken of any article fabricated or assembled from this document without the prior written consent of HBB.

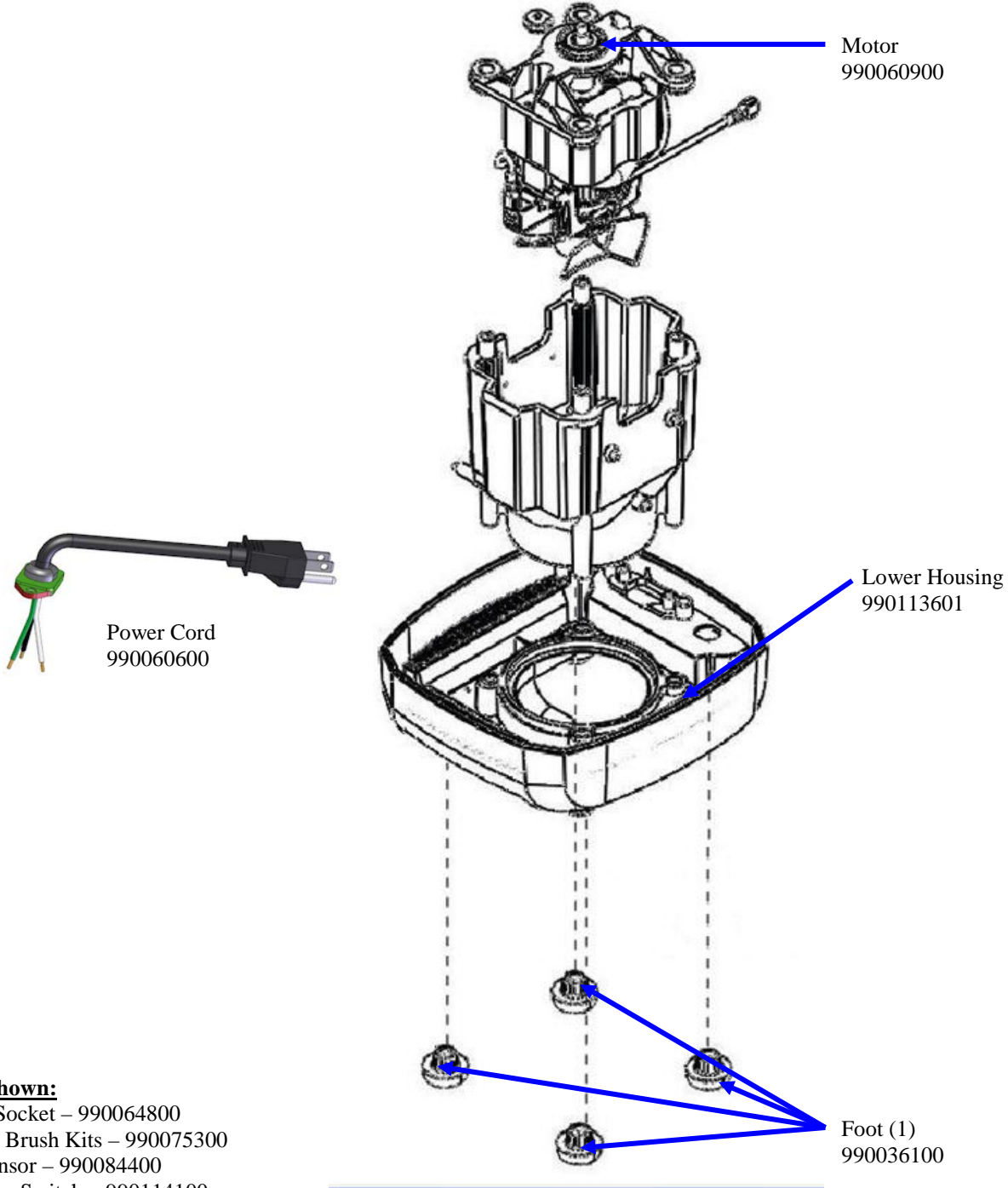


 4421 Waterfront Drive Glen Allen, VA 23060	Revision Description:		Production Release						
	Request Number:		DOC6536	Revision Date:		2/22/16	Approved by:		DOC6536
	Issue Code(s):		CS, SP	Page:	1 of 4	Document #:	540010600	Rev:	A

Replacement Parts Diagrams


HBF600

PROPRIETARY RIGHTS NOTICE This document and all information contained within it is the property of Hamilton Beach Brands, Inc. (HBB). It is confidential and proprietary and has been provided to you for a limited purpose. It must be returned or destroyed upon request. Disclosure, reproduction or use of this document and any information contained within it, in full or in part, for any purpose is forbidden without the prior written consent of HBB. No photographs may be taken of any article fabricated or assembled from this document without the prior written consent of HBB.



Not Shown:

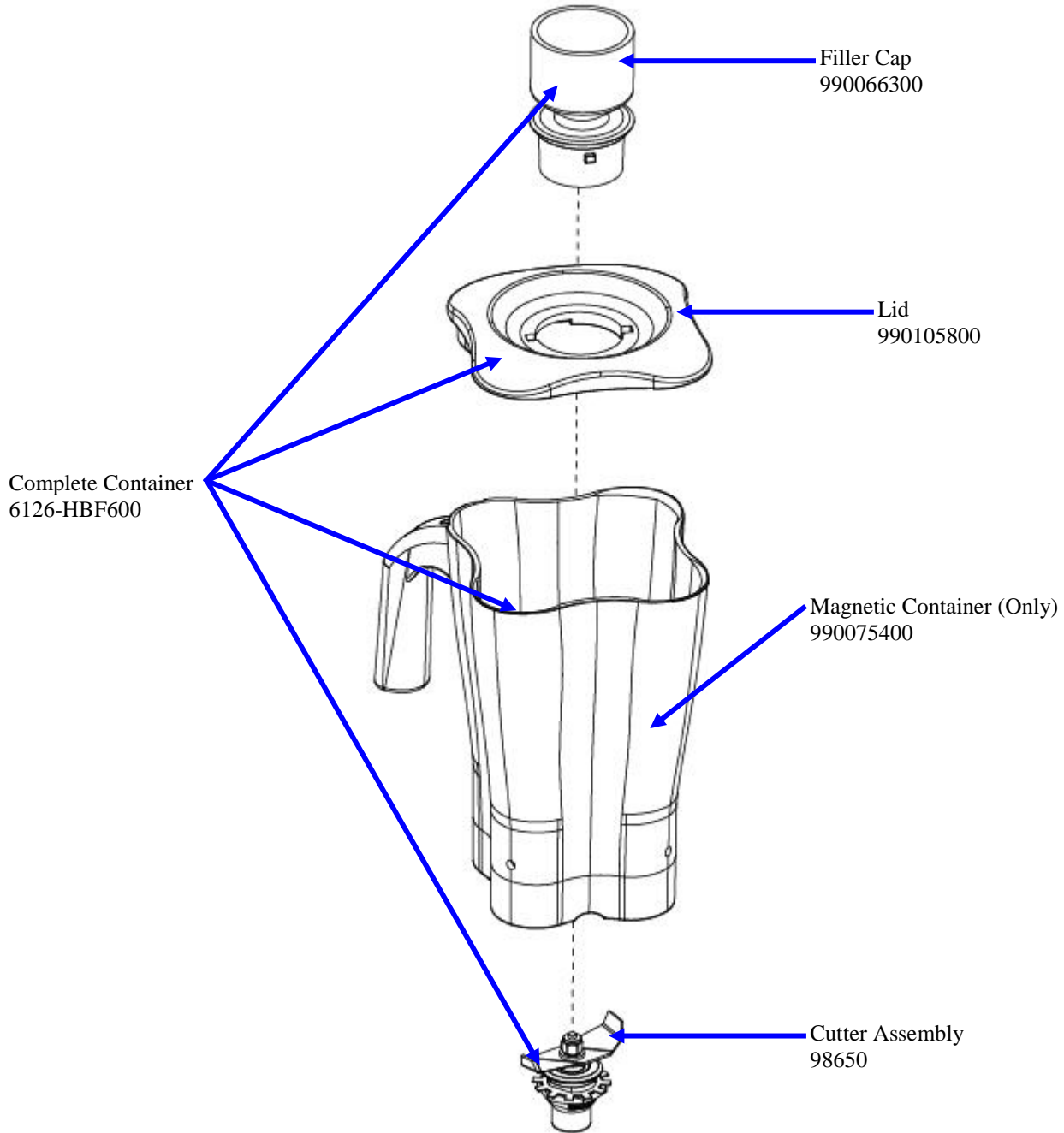
- Cord Socket – 990064800
- Motor Brush Kits – 990075300
- Jar Sensor – 990084400
- Breaker Switch – 990114100


 Hamilton Beach 4421 Waterfront Drive Glen Allen, VA 23060	Revision Description:		Production Release				
	Request Number:	DOC6536	Revision Date:	2/22/16	Approved by:	DOC6536	
	Issue Code(s):	CS, SP	Page:	2 of 4	Document #:	540010600	Rev:

Replacement Parts Diagrams

HBF600

PROPRIETARY RIGHTS NOTICE This document and all information contained within it is the property of Hamilton Beach Brands, Inc. (HBB). It is confidential and proprietary and has been provided to you for a limited purpose. It must be returned or destroyed upon request. Disclosure, reproduction or use of this document and any information contained within it, in full or in part, for any purpose is forbidden without the prior written consent of HBB. No photographs may be taken of any article fabricated or assembled from this document without the prior written consent of HBB.



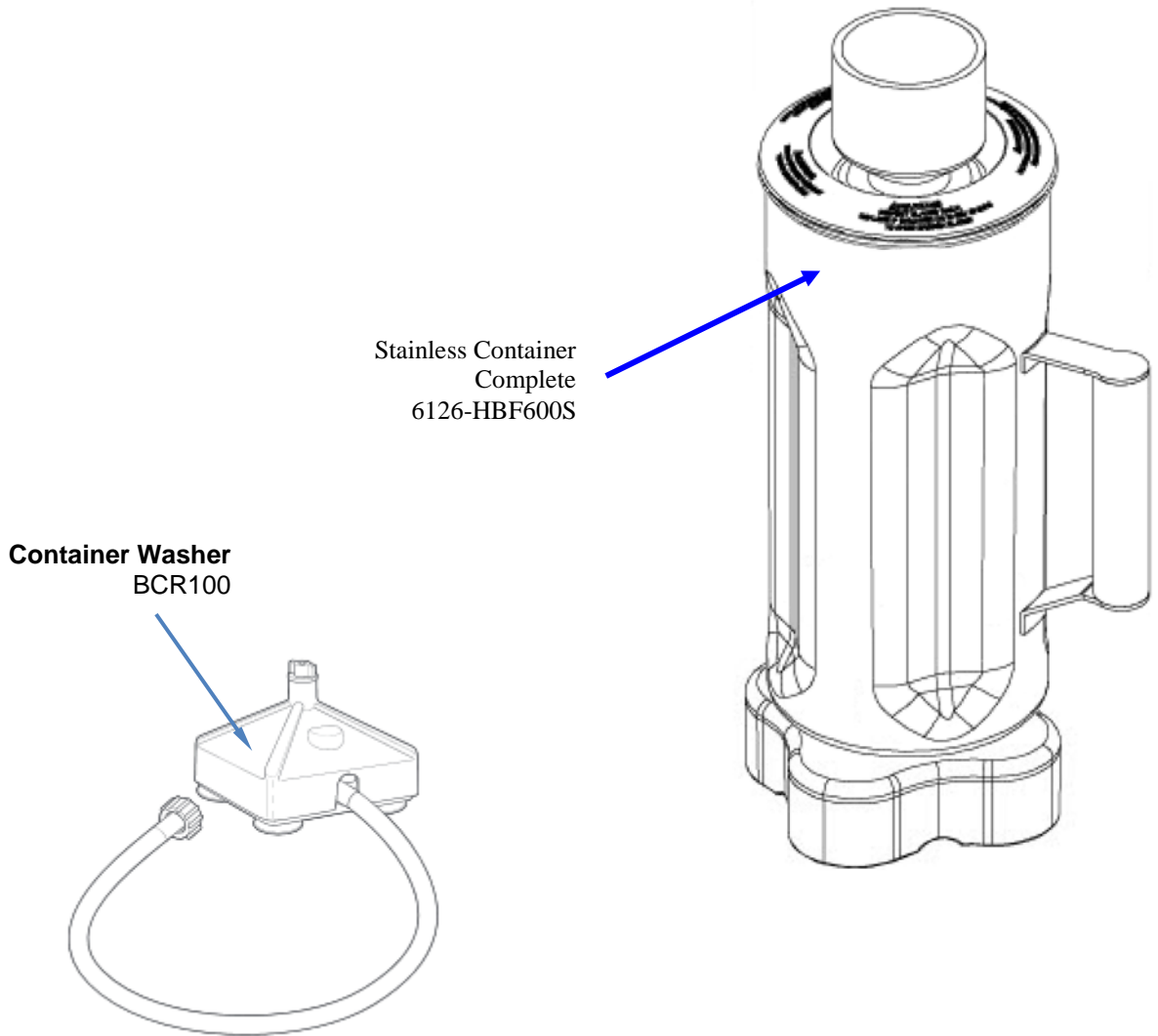
 4421 Waterfront Drive Glen Allen, VA 23060	Revision Description:		Production Release				
	Request Number:	DOC6536	Revision Date:	2/22/16	Approved by:	DOC6536	
	Issue Code(s):	CS, SP	Page:	3 of 4	Document #:	540010600	Rev:


Replacement Parts Diagrams

HBF600

PROPRIETARY RIGHTS NOTICE This document and all information contained within it is the property of Hamilton Beach Brands, Inc. (HBB). It is confidential and proprietary and has been provided to you for a limited purpose. It must be returned or destroyed upon request. Disclosure, reproduction or use of this document and any information contained within it, in full or in part, for any purpose is forbidden without the prior written consent of HBB. No photographs may be taken of any article fabricated or assembled from this document without the prior written consent of HBB.

Accessories



 Hamilton Beach 4421 Waterfront Drive Glen Allen, VA 23060	Revision Description:		Production Release						
	Request Number:		DOC6536	Revision Date:		2/22/16	Approved by:		DOC6536
	Issue Code(s):		CS, SP	Page:	4 of 4	Document #:	540010600	Rev:	A